

FINANSAL KAYNAKLAR
BÖLGE MEKÂN ORGANİZASYONU

KOORDINASYON, İZLEME VE DEĞERLENDİRME
SOSYAL DAYANISMA

FINANSAL KAYNAKLAR

KOORDINASYON, İZLEME VE DEĞERLENDİRME

VE MEKÂN

DOĞAL

İKLİM

İNSAN KAPASİTESİ



KARACADAĞ
KALKINMA AJANSI • DEVELOPMENT AGENCY



2011-2013 TRC2 (DIYARBAKIR-SANLIURFA)

REGIONAL PLAN



SECTION 1

PURPOSE AND SCOPE OF THE PLAN

Regional plan is the most important instrument used for accelerating socio-economic development by raising awareness of the shared development understanding, identifying and actuating the potential and dynamism of the region. The regional plan's main focus is the future envision of the region, the current situation, its resources and the use of these resources for development purposes. Reducing disparities between regions and the realization of sustainable development are the main objectives of regional plans. Furthermore, regional plan is an important interface that ensures that priorities identified at national level meet the needs at the local scale.



SECTION 2

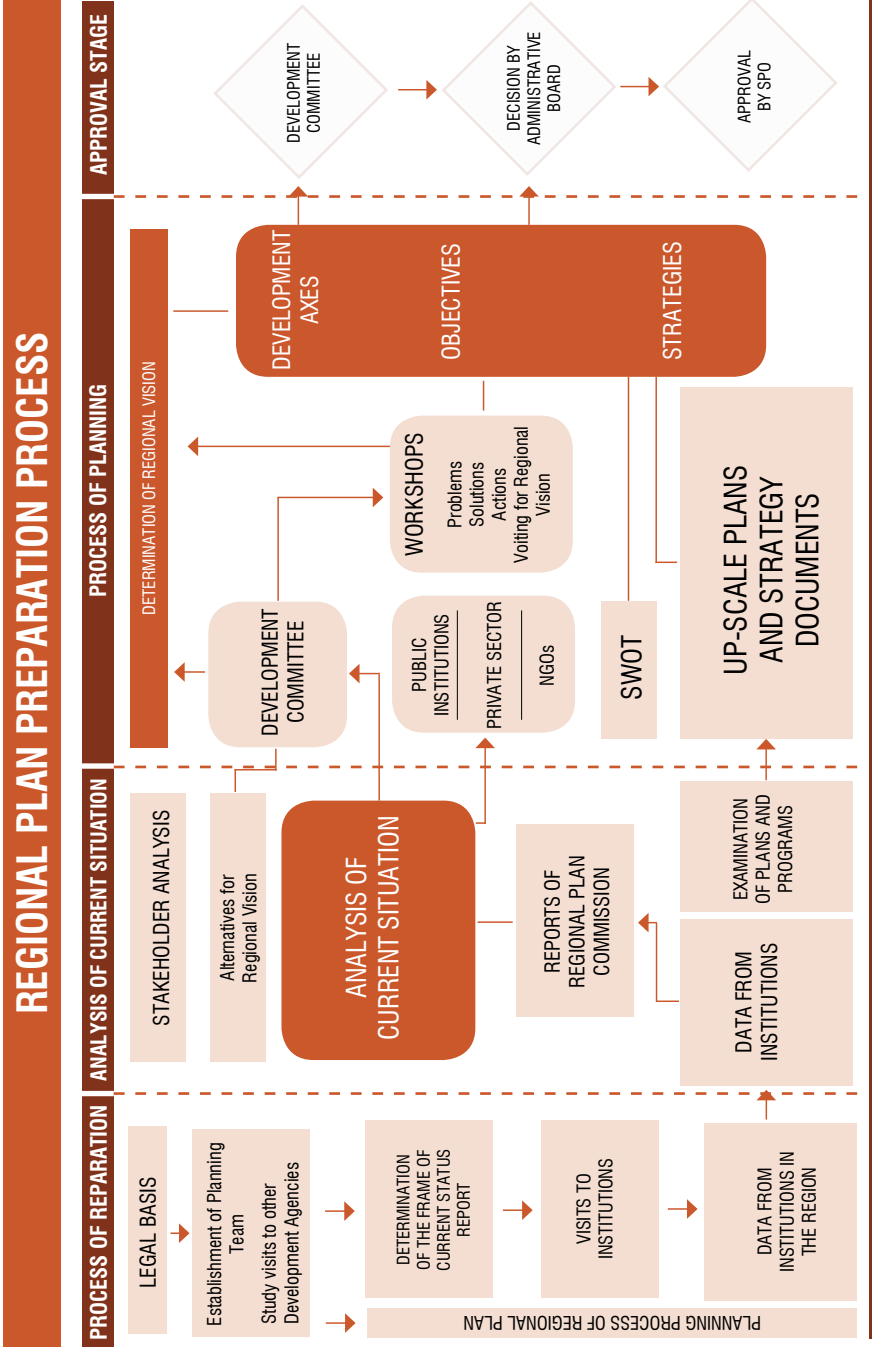
THE PLANNING METHOD AND PROCESS

The Planning Method

2011-2013 TRC2 (Diyarbakir- Sanliurfa) Regional Plan was prepared with participatory and strategic planning approach.

Basic principles of **Regional Plan** are as follows:

- ▶ **Participatory decision-making:** Ensuring participation at each phase of planning has been considered as the base and decisions are produced as a result of common sense.
- ▶ **Bottom-up and top-down planning:** Harmonization of regional and local priorities that plays a key role in planning decisions with national priorities and thus solving regional problems in accordance with national policies.
- ▶ **Sustainable development:** Ensuring social development with urban and economic development, and in this process conserving national resources and environment with consideration of future generations.
- ▶ **Holistic approach:** Interaction of economic, social, spatial and environmental axes has been considered and development of these axes is taken as integrated. Regional Plan is composed of four development axes which are completed and integrated with each other.





SECTION 3

REGIONAL VISION AND DEVELOPMENT AXES

REGIONAL VISION

The region realizing its potential for tourism while conserving natural and cultural heritage, improving the quality of life by turning its resources into the production and employment, Middle East's thriving trade center

‘ ‘ D i y a r b a k i r - S a n l i u r f a ’ ’



AXIS 1

EMPLOYMENT CAPACITY AND COMPETITIVENESS

Determined in accordance with the problems, needs and potentials of the region, Employment Capacity and Competitiveness development axis contains the basic objectives of economic development and it is supported and complemented by other development axes.

OBJECTIVE 1.1- To Improve Region's Service Delivery Capacity Through Urban Economies

It is aimed to strengthen role of Diyarbakir as the service center and improve competitiveness of the region in service sector by diversification, specialization and improving quality in the provision of goods and services.

- ▶ **Strategy 1.1.1** Improving Specialization and Quality in Service Sector, Strengthening the Role of Diyarbakir as the Service Center
- ▶ **Strategy 1.1.2** Development of Cross-Border Cooperation and Increasing Foreign Trade
- ▶ **Strategy 1.1.3** Utilizing Tourism Potential of the Region to the fullest by Development, Diversification and Promotion of Tourism Opportunities

OBJECTIVE 1.2- To Increase Employment and Value-Added in Production

It is aimed to build capacity in employment by increasing efficiency of industrial and agricultural production, transition to high value-added production system, improvement of manufacturing industry compatible with regional potentials and consumer demands, and enhancing capacities of SMEs.

- ▶ **Strategy 1.2.1** Increasing Efficiency in Agricultural Production, Encourage High Value Added Products and Attaining Competitive Structure for Agriculture Sector
- ▶ **Strategy 1.2.2** Increasing Production Capacity and Value - Added in Industry
- ▶ **Strategy 1.2.3** Enhancement and Institutionalization of SMEs

OBJECTIVE 1.3- To Create New Business Opportunities in the Region by Developing Entrepreneurship Culture

It is intended to increase production and employment capacity in the region by creating new business opportunities, raising awareness about entrepreneurship, developing and increasing access to financial instruments for entrepreneurs.

- ▶ **Strategy 1.3.1** Raising Awareness and Strengthening Instruments on Entrepreneurship to Actuate Dynamics of the Region
- ▶ **Strategy 1.3.2** Developing and Increasing Access to Financial Instruments for Entrepreneurs

OBJECTIVE 1.4- To Improve Business and Investment Environment

Improvement of infrastructure in the work areas, development of human capital in line with the regional development policies, improvement of the business environment by improving the quality of life in the region, taking emergency measures for elimination of the negative image of the region, increasing attractiveness of the region in terms of investment by promotion of regional potential are intended.

- ▶ **Strategy 1.4.1** Improving Capacity of Organized Work Places by Strengthening Their Infrastructure
- ▶ **Strategy 1.4.2** Promotion of Specialization and Clustering in Industry
- ▶ **Strategy 1.4.3** Development of Human Capital Compatible with Labor Demand
- ▶ **Strategy 1.4.4** Improving Quality of Life in the Settlements
- ▶ **Strategy 1.4.5** Increasing University-Industry Cooperation
- ▶ **Strategy 1.4.6** Increasing Level of Recognition and Elimination of Negative Image of the Region



AXIS 2

HUMAN AND SOCIAL CAPITAL, SOCIAL SOLIDARITY

This axis is basically considered within a framework of development of human resources and ensuring equality of opportunity in terms of access to services and it has an integrated structure with other axes -particularly the first development axis- and they complement each other.

OBJECTIVE 2.1- To Ensure Compliance with the Regional Development Policies in Education

It is aimed to improve education quality and develop qualified human resources by developing vocational education in accordance with the needs of regional production and services.

► **Strategy 2.1.1** Improving the Quality of Education, Increasing Enrollment Rates in Preschool and Secondary Education

► **Strategy 2.1.2** Development of Qualified Human Resources with Lifelong Learning Approach

OBJECTIVE 2.2- To Enhance Institutional Capacity

It is aimed to improve the capacities of public institutions, local governments and NGOs in the region, establishment of cooperation networks and interagency coordination which will enable institutions to focus on development goals.

► **Strategy 2.2.1** Institutional Capacity Building of Local Administrations and NGOs

► **Strategy 2.2.2** Strengthening Coordination and Cooperation among Institutions and Organizations

► **Strategy 2.2.3** Increasing Participation in Decision Making Process within the Framework of Governance Principles

OBJECTIVE 2.3- To Provide Effective and On-site Social Service Provision

It is aimed to minimize social problems arising from increasing poverty related with migration and disparities in income distribution, to improve the quality and access to social service delivery especially for disadvantaged groups and to ensure social cohesion.

Strategy 2.3.1 Improvement of Health Services

Strategy 2.3.2 Improvement in Quality and Accessibility of Social Service Delivery

Strategy 2.3.3 Development of Policies for Reducing Poverty and Income Differences in the Region



AXIS 3

SPATIAL ORGANISATION OF THE REGION, QUALITY OF LIFE AND SPACE

This axis includes objectives related to improving spatial organization of the region, creating infrastructure in a way that allows the realization of regional development and improving quality of life and space in the settlements.

OBJECTIVE 3.1- To Utilize Spatial and Human Potential of Sub-Regions to the Fullest

Preparation of appropriate development scenarios for settlements which differ in terms of geographical, spatial, and human potential, creation of interaction at regional scale by strengthening relations among settlements and creation of regional synergy are intended.

Settlements in TRC2 Region are discussed in four different groups in terms of their geographical location, accessibility, population size and dynamics, infrastructure investments, economic structures, resources and potentials.

1st Group Settlements (Disadvantaged Settlements):

Cungus, Dicle, Egil, Hani, Hazro, Kocakoy, Kulp, Lice ve Halfeti.

2nd Group Settlements (Small and Medium Size Settlements; Population of 10.000-50.000):

Cermik, Cınar, Silvan, Akcakale, Birecik, Bozova, Ceylanpınar, Harran ve Hilvan.

3rd Group Settlements (Big Settlements; Population of 50.000-250.000):

Bismil, Ergani, Siverek, Suruc ve Viransehir.

4th Group Settlements (Metropolis; Population of 250.000-1 Million):

Diyarbakir ve Sanliurfa cities.

Strategy 3.1.1 Design of Appropriate Development Scenarios for Sub-regions with a Participatory Approach

OBJECTIVE 3.2- To Improve Regional Transportation and Infrastructure

It is aimed to enable transport system as an instrument for spatial organization, economic and social development of the region, to create integrated modes of transportation and improve infrastructure in such a way to support development goals.

- ▶ **Strategy 3.2.1** Developing Regional Transportation Infrastructure and Ensuring Integration between Different Modes of Transportation
- ▶ **Strategy 3.2.2** Improvement and Enhancement of Urban Infrastructure

OBJECTIVE 3.3- To Improve Quality of Life and Space in Urban and Rural Settlements

Equipping urban and rural areas with appropriate infrastructure and superstructure investments, diversification of income sources for rural areas and improving quality of life are intended under this objective.

- ▶ **Strategy 3.3.1** Increasing the Level of Quality of Life in Urban Areas
- ▶ **Strategy 3.3.2** Improving the Quality of Life and Space in the Rural Areas



AXIS 4

NATURAL RESOURCES AND CULTURAL HERITAGE

The main purpose of the axis is to conserve natural resources and environment in line with the principle of sustainable development of the Regional Plan while the economic and urban development continues. This axis is integrated with and complementary to the other development axes.

OBJECTIVE 4.1- To Ensure Sustainable Use of Water and Soil Resources

It is aimed to ensure the balance of use of and conservation of water resources and preventing loss in quality of soil sources as well as erosion.

► **Strategy 4.1.1** Conservation of Water Basins and Achieving Efficiency in Use of Water Supply

► **Strategy 4.1.2** Preventing Soil Degradation and Losses in Quality of Soil

OBJECTIVE 4.2- To Improve Quality of Environment and Promoting the Use of Renewable Energy

For sustainable environment and ecosystems; improving the environment by taking control of industrial and agricultural based pollutants and promoting renewable energy and environment-friendly technologies in the region are intended.

► **Strategy 4.2.1** Improvement in Quality of Environment by Preventing Pollution

► **Strategy 4.2.2** Utilizing the Potential of Renewable Energy and Promoting Environment-friendly Technologies

OBJECTIVE 4.3- To Improve Cultural Heritage While Conserving

It is aimed to reveal and certify cultural heritage, improve the historical and cultural assets, promote and develop the potential of cultural tourism in the region and to raise awareness of the public on cultural heritage.

► **Strategy 4.3.1** Revealing, Certifying and Promotion of Cultural Heritage

► **Strategy 4.3.2** Improvement and Development of Historical and Cultural Values through Protection Policies and Practices



SECTION 4

SPATIAL DEVELOPMENT

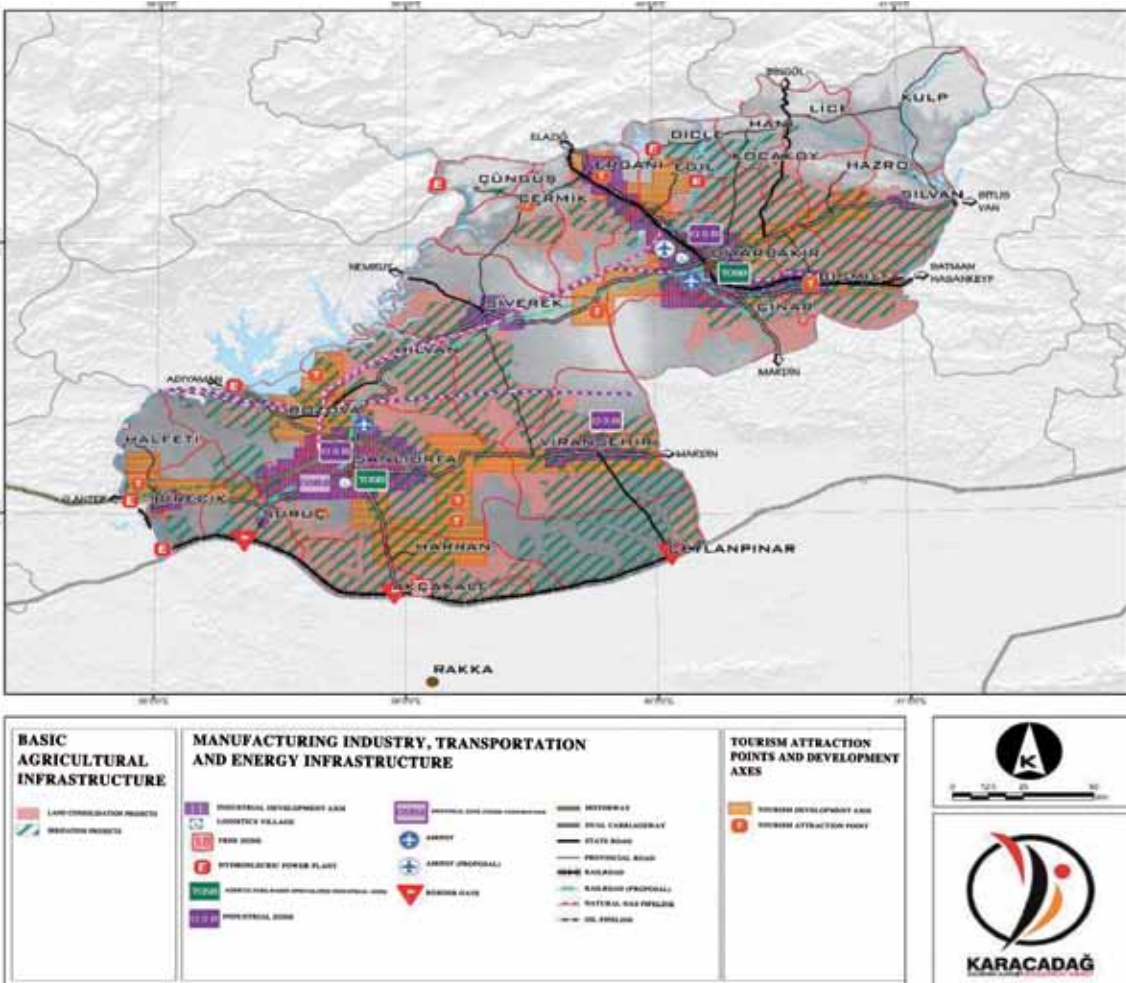
In this section, spatial presentations of 2011-2013 Diyarbakir-Şanlıurfa Regional Plan decisions are provided.

The areas in which plan decisions will be implemented are shown schematically on thematic development maps. The decisions that are made in this respect are aimed to be as guidance document for sub-scale plans and practices prepared at local level.

Spatial development thematic map is a synthesis map that demonstrates the projected development areas of basic infrastructure in agriculture, industrial development axes, development of transportation infrastructure and tourism development axes.

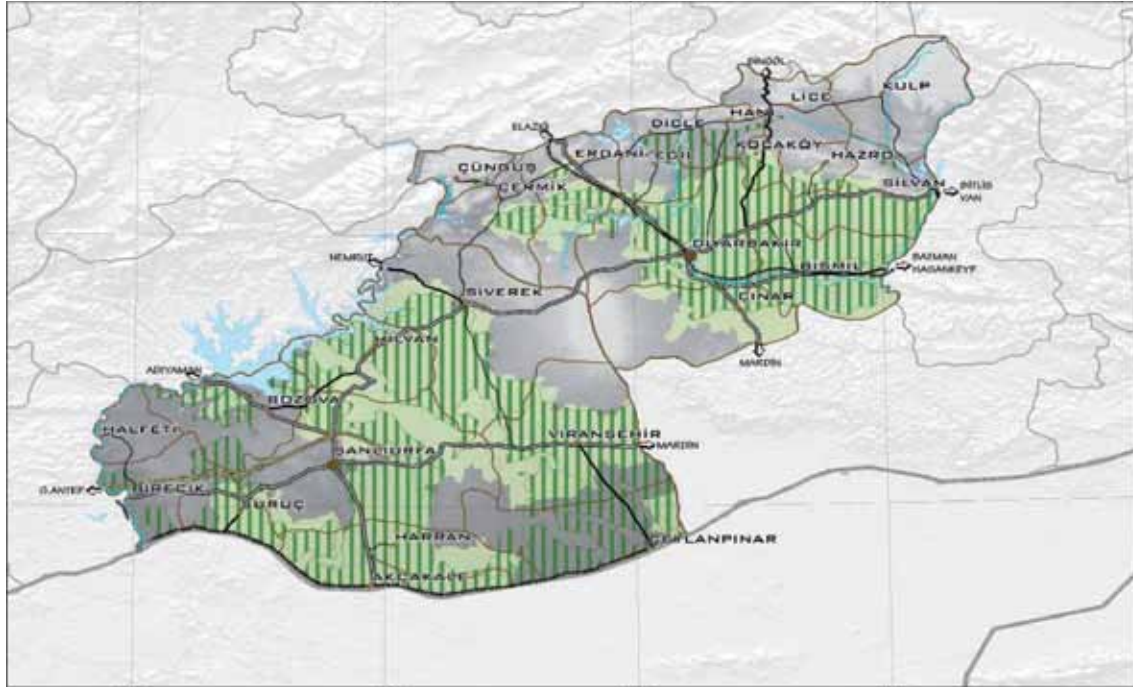
Map 1

Spatial Development Thematic Map



Map 2

Basic Agricultural Infrastructure Thematic Map



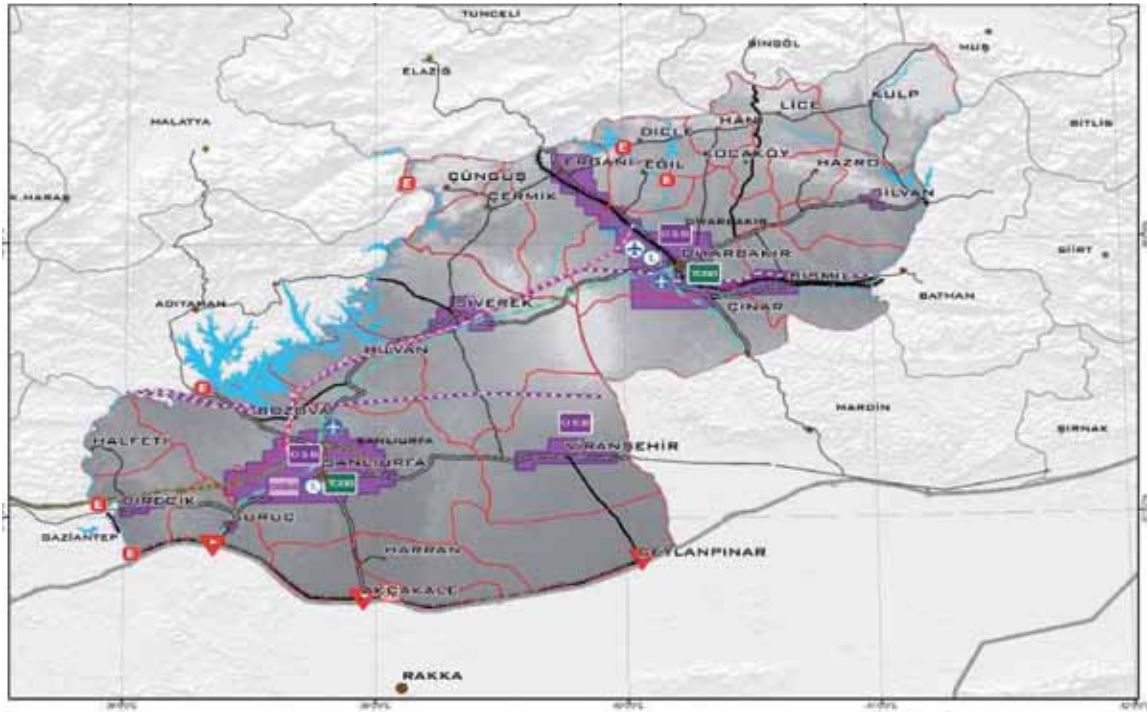
BASIC AGRICULTURAL INFRASTRUCTURE

-  IRRIGATION PROJECTS
-  LAND CONSOLIDATION PROJECTS
-  MOTORWAY
-  DUAL CARRIAGEWAY
-  STATE ROAD
-  PROVINCIAL ROAD



Map 3

Manufacturing Industry, Transportation and Energy Infrastructure Thematic Map



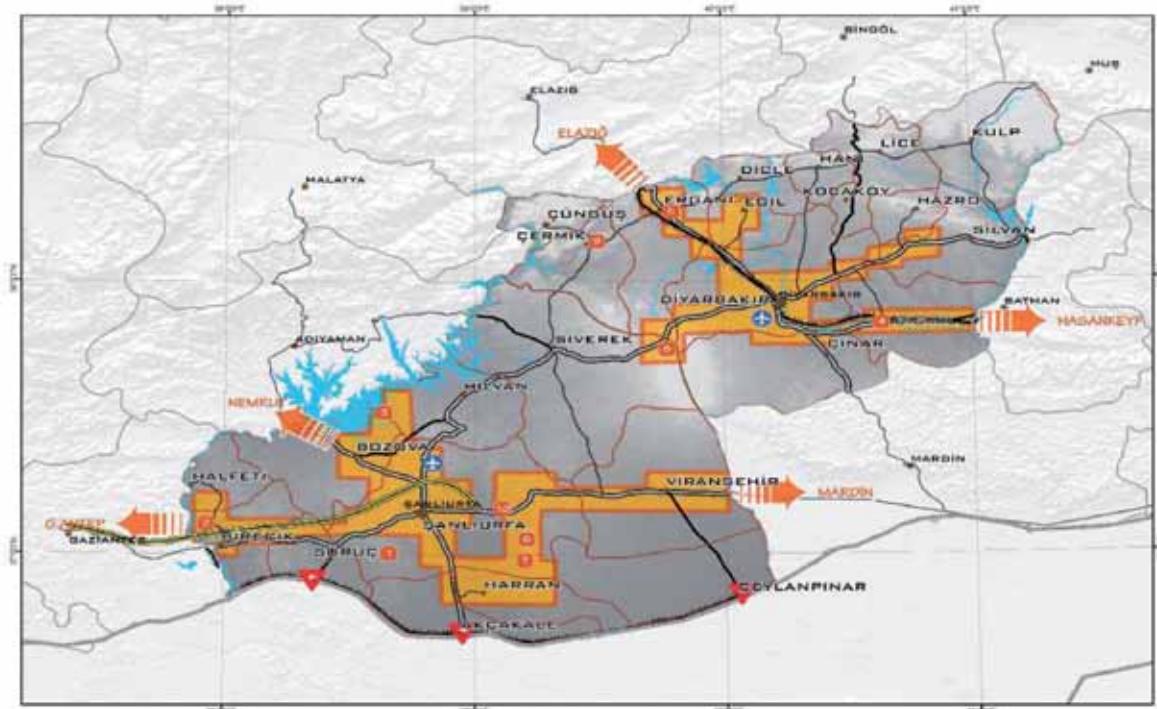
MANUFACTURING INDUSTRY, TRANSPORTATION AND ENERGY INFRASTRUCTURE

- | | | | | | |
|--|---|--|--------------------------------------|--|---------------------|
| | INDUSTRIAL DEVELOPMENT AXES | | INDUSTRIAL ZONES | | MOTORWAY |
| | LOGISTICS VILLAGE | | INDUSTRIAL ZONE (UNDER CONSTRUCTION) | | DUAL CARRIAGEWAY |
| | FREE ZONE | | AIRPORT | | STATE ROAD |
| | HYDROELECTRIC POWER PLANT | | AIRPORT (PROPOSAL) | | PROVINCIAL ROAD |
| | AGRICULTURE-BASED SPECIALIZED INDUSTRIAL ZONE | | BORDER GATE | | RAILROAD |
| | | | NATURAL GAS PIPELINE | | RAILROAD (PROPOSAL) |
| | | | OIL PIPELINE | | |



Map 4

Tourism Development Axes Thematic Map



TOURISM ATTRACTION POINTS AND DEVELOPMENT AXES

 TOURISM DEVELOPMENT AXES

 AIRPORT

 BORDER GATE

 TOURISM ATTRACTION POINTS

1 KIZILKIYU WILDLIFE DEVELOPMENT AREA

2 BALD IRIS HATCHERY

3 ATATURK RESERVOIR WETLAND AREA

4 TUMULUS, NEOLITHIC CENTERS, ARCHAEOLOGICAL SITES

5 CAYONU SETTLEMENT

6 TEK TEK MOUNTAINS NATIONAL PARK

7 BOGMATAR ANCIENT CITY


8 KARACADAĞ İKİ CENTER

9 CERMIK THERMAL TOURISM CENTER

10 KARALI SPA

 MOTORWAY

 DUAL CARRIAGEWAY

 STATE ROAD

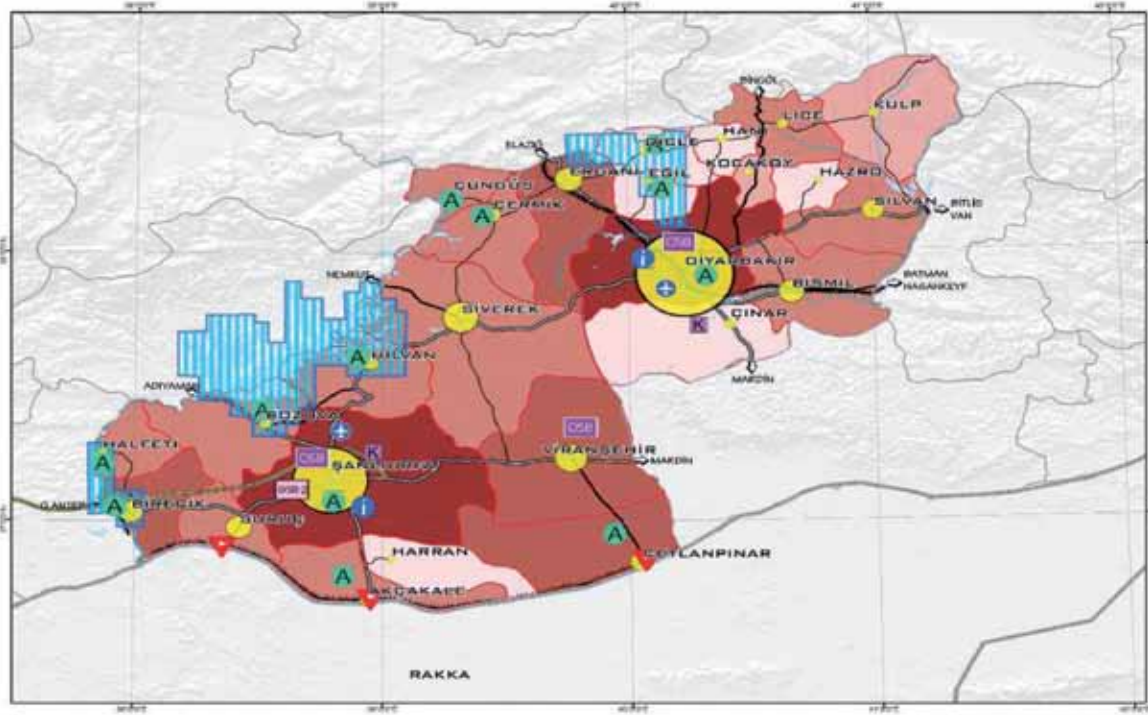
 PROVINCIAL ROAD

 RAILROAD



Map 5

Settlements System, Basic Infrastructure and Accessories Thematic Map



**SETTLEMENTS SYSTEM
BASIC INFRASTRUCTURE AND ACCESSORIES T**

| | |
|---------------------------------------|--|
| WATER TREATMENT PLANT | INTEGRATED WATER AND SEWER TREATMENT PLANT |
| WASTE WATER TREATMENT PLANT | MOTORWAY |
| SOLID WASTE STORAGE AREA | DUAL CARRIAGEWAY |
| INDUSTRIAL ZONES | STATE ROAD |
| INDUSTRIAL ZONES (UNDER CONSTRUCTION) | PROVINCIAL ROAD |
| BORDER GATE | RAILROAD |
| AIRPORT | |

DEVELOPMENT INDEX

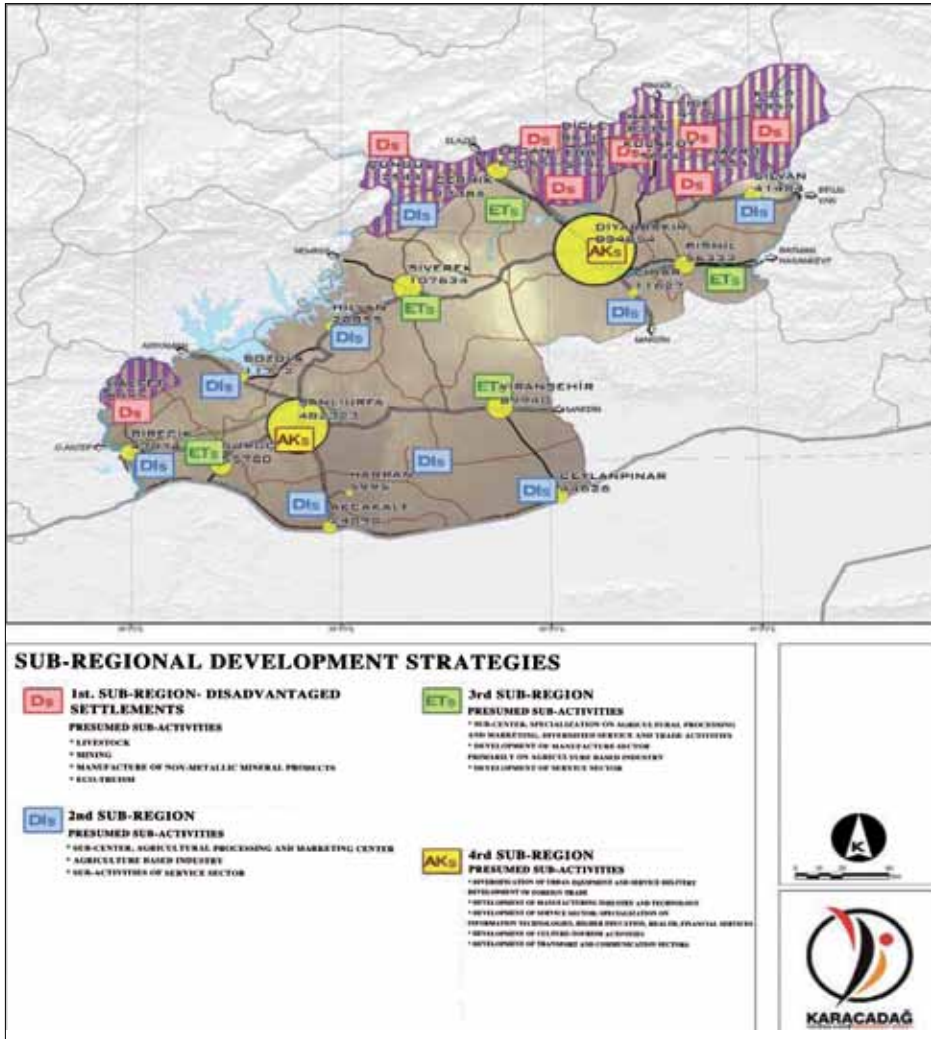
1.000000 ————— 1.000000

SETTLEMENT SIZE

3.0000 10.0000 100.0000 750.0000

Map 6

Sub-Regional Development Axes Thematic Map





KARACADAĞ
KALKINMA AJANSI • DEVELOPMENT AGENCY

Peak of Local Development

Address: Selahattini Eyyubi Mah. Urfa Bulvarı No: 15/A 21080 Bağlar / DIYARBAKIR

Phone: +90 412 237 12 16 - 17 **Fax:** +90 412 237 12 14

Web: www.karacadag.org.tr

E-mail: info@karacadag.org.tr

ISBN: 978-605-61459-1-9